

October eNewsletter

Lewis County Chamber of Commerce



ITS TIME FOR LEAF PEEPING!

Don't miss out on the Rocky Fawcett Fall Foliage Tour this weekend! Read for an update on our location. If you're looking to win some great prizes - join our 144 Envelope Fundraiser!

WHAT'S INSIDE THIS ISSUE:

Message from Our Director
New Members
New Location
Fall Foliage Tour
144 Envelopes

A Message from Our Director

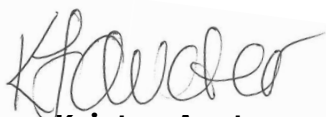
Chamber Members,

On behalf of the Lewis County Chamber of Commerce, I would like to thank our Lewis County business community for their hard work and dedication getting through 2020. While the turmoil that we all experienced threw many of us for a loop, our business community became more innovative than ever to strengthen themselves and Lewis County as a whole.

Our 2021 goal is simple - improve the benefits of membership with the Chamber and continue the innovation process that we all started. The Lewis County Chamber has always been known to provide a helpful, smiling face when a visitor comes to town to explore. But, what we can expand and improve on is business development services for members. To do this we will be working hand in hand with Lewis County Economic Development (LCED) to provide business development resources to members. Second, we will strive for better communication between all parties, including visitors, local and regional businesses, and from our staff and Board of Directors. This can be executed through e-newsletters, routine announcements, targeting round table discussions, and a more stable presence in the main office. Finally, we will work to refresh our “brand”. This includes regular updates to print materials and the Chamber website, simplifying our message, and even giving our new office a facelift to better greet visitors. We will also continue to host and participate in annual events that bring our community together for networking and entertainment. Business After Hours, Annual Awards, Riverfest, Cream Cheese Festival, Lewis County Fair and more. These are staple functions at the Chamber, and we will ensure these services are sustained.

Please visit our new, simplified website that makes finding your business easier. If you would like to be listed under a different category, please contact me and I will make sure it gets changed. Again, thanks for your continued support of the Chamber of Commerce. Membership renewals will be going out next month and I urge you to take an active role in your Chamber as we continue to move forward.

Best Wishes,



Kristen Aucter

Executive Director

Lewis County Chamber of Commerce



WELCOME!

To our new members!



The Little Locksmith

(315) 286-1777

7702 North State St

Lowville, NY 13367

thelittlelocksmith.com

Don't look further, here is the key.
The Little Locksmith is here to help
you manage your residential and
business locksmith needs.



ROCKY FAWCETT FALL FOLIAGE TOUR



October 3rd, 2020

Join us for our 2020 Rocky Fawcett Memorial Drive It
Yourself Fall Foliage Tour!

Who doesn't love to see the beautiful fall colors in our lovely
Adirondacks Tug Hill Region? This tour gives you the perfect
opportunity to support local businesses, to visit all the wonderful
places in Lewis County, and to see plenty of those magically
colorful tree tops!

This years tour will be the 48th!

A sneak peak at this years stops:

Autumn Ridge Goat Farm

Constable Hall

Cummings Farm Creamline Milk

Hidden Pastures

LC Humane Society

Steak n' Brew

West Martinsburg Mercantile



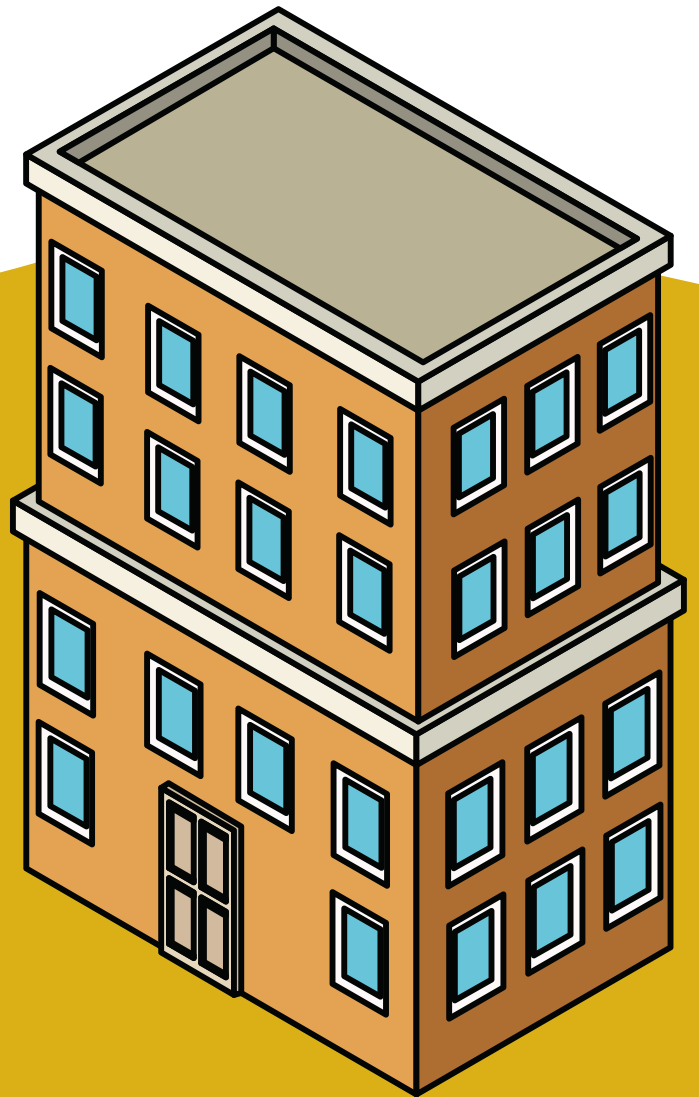
WE HAVE MOVED!

Our new address is
7551 South State St.

We look forward to
seeing you
downtown!

This past week (Sept 29th-Oct
1st) we were closed in order to
move to our new location
downtown.

We have relocated from our old location in the Center for Business (the old Climax building) to South State Street between Kathy's Barbershop and National Abstract! We are sharing the space with Naturally Lewis. Naturally Lewis hopes that the space will be a shared office space in the future. Look for us at our new address - 7551 South State St. starting tomorrow October 2nd! Currently we are working out some kinks and have limited access to the internet, and our phones until they are resolved. We will get back to you as soon as we are able and thank you for your patience!



144 Envelope Fundraiser

A RAFFLE WITH A CHANCE FOR 10 GREAT PRIZES!

WHAT IS IT?

A fundraiser to support local businesses and the Chamber.

It is a Fundraiser to help our local small businesses & the Chamber to continue accomplishing our mission to promote business & economic activity in Lewis County.

All prizes are being purchased from (not donated by) local Chamber businesses!



HOW DOES IT WORK?

Each envelope contains a corresponding number of tickets.

Envelopes 1-20 each have 20 Raffle tickets in them, from Envelope 21 on each envelope has the number of raffle tickets in it as the envelope is numbered. So envelope 123 has 123 raffle tickets, envelope 77 has 77 raffle tickets and so on. Envelopes 1-20 are almost sold out! If the envelopes are "too big" you can split them with a friend! After you purchase an envelope we will give you the raffle ticket numbers or you can come in and get your half of the tickets.

WHEN WILL THE WINNERS BE DRAWN?

All envelopes need to be sold!

We will draw the winners for all 10 packages as soon as all envelopes are sold. All raffle tickets go into the same pot and you have ten chances to win! The bigger your envelope - the higher your chance of winning.



WHAT CAN I WIN?

Our ten prize packages are listed in the next two pages!



WINE LOVERS !

IMPRESS YOUR FRIENDS WITH YOUR VERY OWN PERSONAL WINE CELLAR!

Includes a wine fridge, several bottles of wine made at Tug Hill Vineyards! Valued at \$350



IT'S TEE TIME !

This package includes 3 rounds of Golf at Brantingham Golf Course and \$75 towards food and drink at their clubhouse!



Value of \$500!

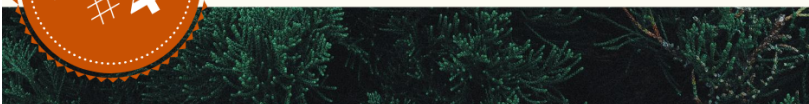


CAMP/ DIY PACKAGE!



VALUE OF \$400!

BUCKINGHAM HARDWARE WILL PROVIDE YOU WITH ALL YOU NEED FOR A RELAXING WEEKEND AT CAMP OR HELP YOU ALONG WITH YOUR DIY PROJECT WITH THIS GIFT CERTIFICATE!



HOME DESIGN PACKAGE!

A \$400 Value!

Let the Farmhouse Boutique, West Martinsburg Mercantile and Amish Connection turn your house into a home with a cozy blanket and gift cards from each store!



FOODIE LOVE!

VALUE OF \$400!

WHY COOK WHEN YOU CAN GET OTHERS TO DO IT FOR YOU? ENJOY GIFT CERTIFICATES TO SEVERAL LOCAL RESTAURANTS! STEAK 'N' BREW, JEBB'S RESTAURANT, BOONDOCKS, LLOYD'S DINER, JOSH'S RIVERSIDE RESTAURANT, PB&J CAFE, GARY'S RESTAURANT AND BRICKOVEN INN



Call (315) 376-2213 or email admin@lewiscountychamber.org for available envelopes or for more information!

Package
#6

MEAT CRATE

A \$400 Value!

TIME TO GET YOUR CARNIVORE ON!
FILL YOUR FREEZER OR GRILL WITH
AMAZING SELECTIONS FROM EDDIE'S
MEAT MARKET & CROGHAN MEAT
MARKET.



Package
#7

WEEKEND STAYCATION!

A \$400 Value!

SICK OF STAYING HOME BUT NOT
READY TO TRAVEL YET? JUDGE'S
QUARTERS B&B WILL HOST YOU & A
GUEST TO A LOVELY STAYCATION*
WITH BREAKFAST AND LODGING AT
THEIR BEAUTIFUL B&B.

*based on availability

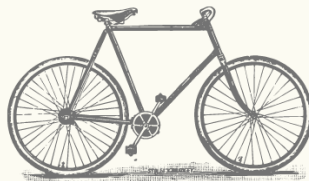


Package
#8

LETS RIDE !

A \$400 Value!

WIN A BEAUTIFUL BIKE FROM
CYCLE THERAPY TO GET OUT
AND ENJOY LEWIS COUNTY ON
TWO WHEELS!



Package
#9

LEWIS COUNTY LUXURY !



A \$400 Value!

USE THIS GIFT CARD TO PAMPER YOURSELF OR A LOVED ONE
AT DRIFT DAY SPA. WHETHER YOU GET A MASSAGE, FACIAL,
MANICURE, PEDICURE OR MORE YOU WILL FEEL LIKE A NEW
PERSON WHEN YOU LEAVE.

GRAND
PRIZE



CASH IS KING

\$1000 Cash Prize!

Call (315) 376-2213 or email admin@lewiscountychamber.org
for available envelopes or for more information!

The background of the entire page is a repeating pattern of stylized pumpkins in various colors including orange, yellow, and light pink. The pumpkins are arranged in a grid-like fashion, filling the entire space.

OCTOBER 2020 | VOL. X

**Thank You for
Reading!**

Stay Safe & Healthy

Lewis County Chamber of Commerce

A solid orange horizontal bar located below the text "Lewis County Chamber of Commerce".