

# eNEWSLETTER

LEWIS COUNTY CHAMBER OF COMMERCE |  
JANUARY 2022

# HELLO 2022

LOOKING FORWARD TO A NEW YEAR

CHECK OUT LOCAL EVENTS AT -> [ADIRONDACKSTUGHILL.COM/CALENDAR](https://adirondackstughill.com/calendar)

## **MESSAGE FROM OUR VICE CHAIR**

Happy New Year!

My name is Jackie Mahoney, and I am currently the vice chair of the Chamber Board and have been on the chamber board for almost 9 years. My full-time job is as the Director of Recreation, Forestry and Parks for Lewis County. That makes me a great partner with the chamber to promote Lewis County. You will often see me at the trade shows with Kristen, promoting the local recreational trails and businesses. Lewis County has many small businesses, so many that is often hard to showcase them all. Just from my own personal experience, I try to promote the visitors guide and talk about my experiences and point out specialty shops. I also try to ask people what their local favorites are as well.

I believe in shop small, shop local where your purchases benefit local families and with the new year often comes a time for reflection and resolutions. This year I have really taken a hard look at myself, my family and what I can do for my community. For 2022, I plan to explore more local shops and share my positive experiences. I and I would love to hear more about your resolutions and goals for 2022 or feel free to reach out anytime if you have ideas on how we can improve Lewis County chamber of Commerce, Lewis County Recreation, Forestry and Parks or ways we support our local businesses. I can be reached by email at [jackiemahoney@lewiscounty.ny.gov](mailto:jackiemahoney@lewiscounty.ny.gov)

Thank you and Happy New Year!

**Jackie Mahoney | Vice Chair**





## CUISINE TRAIL SPOTLIGHT

# Autumn Ridge Goat Farm



Autumn Ridge Goat Farm is committed to producing fresh, high quality chevre and feta goat milk cheese in a variety of flavors and sizes using milk from their herd of 40 goats. A large variety of goat milk soap and lotions are available in their "Cheese and Gift Shop".

You can find their "Cheese and Gift Shop" in Turin (address below) to browse through their many products.

Not only does their farm stand carry a variety of wonderful Autumn Ridge products but also carries products from other local producers. We love to see our local businesses work together.

From spring-fall you might see Autumn Ridge Goat Farm at some of our local farmers markets as well!

Recently Autumn Ridge Goat Farm shared that they had recently received a goat harness to fulfill their dreams of having a goat pull a wagon! We love this idea and fully support their "goat obsession".

Looking to visit Autumn Ridge Goat Farm?

Their farm stand is located at:

5030 State Route 26, Turin, New York 13473



# January GIVEAWAY

**WIN** a gift basket from  
**AUTUMN RIDGE &**  
1 item of choice from the **ADK Tug Hill Shop!**

## How can you win?

Like the post on either Facebook or  
Instagram and tag a friend in the  
comments!

The posts are linked here:



The winner will be randomly selected on January 17th!

### Terms and Conditions:

In order to win the giveaway you must be a resident of New York State and must be able to pick up the prize within two weeks at the Lewis County Chamber of Commerce office (7551 South State Street, Lowville, 13367).



January 28th, 2022



# Event Planning Roundtable

Creating a blueprint to highlight and create event collaboration in Lewis County!

Do you

- have events scheduled?
- have event ideas?
- want to assist those hosting events in Lewis County?
- need ideas on how to promote your event?

Bring your ideas to the table on how we can make events in Lewis County beneficial and successful regardless of your mission together!

A background image showing a group of four people (three men and one woman) gathered around a table, looking at a large sheet of paper, likely a blueprint or map. They appear to be in a collaborative meeting. The image is overlaid with a semi-transparent orange filter.

> REGISTER NOW



Snow Ridge Ski Resort



8:30am-11am

# 2022 MEMBERSHIP RENEWALS



## MEMBERSHIP RENEWALS HAVE BEEN SENT



Membership renewals were sent by mail  
at the begining of this month -  
if you do not receive yours by next week  
(January 14th) reach out to us!

[ADMIN@LEWISCOUNTYCHAMBER.ORG](mailto:ADMIN@LEWISCOUNTYCHAMBER.ORG)

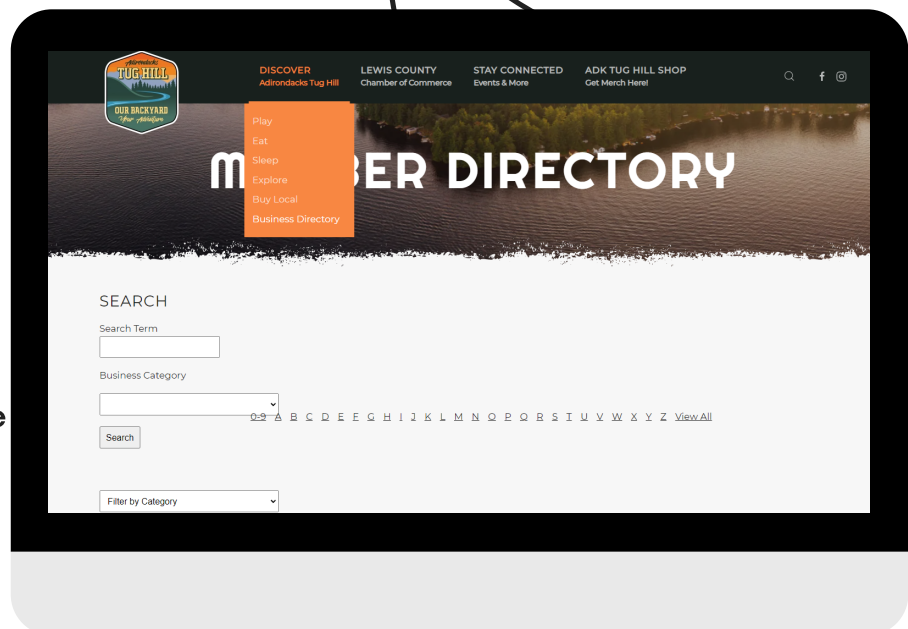


## WE LOOK FORWARD TO WORKING WITH YOU IN 2022

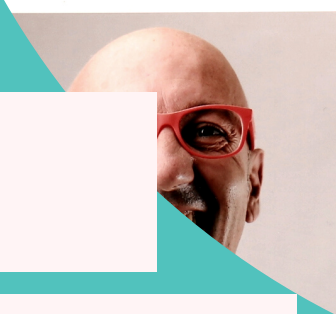
This year we will be sending out  
Membership Renewal packets on a  
monthly basis. The packets will be  
sent a month after payment has been  
received. Packets will be sent start  
mid-February.

We encourage you to take a peak at  
your listing on our website to see if it  
needs any updates or if you would like  
to make any changes!

[ADIRONDACKSTUGHILL.COM/MEMBER-DIRECTORY/](http://ADIRONDACKSTUGHILL.COM/MEMBER-DIRECTORY/)







# Impactful Leadership

**THE LEADERSHIP ACADEMY SESSION  
PLANNED FROM JANUARY 7TH-JUNE 16TH  
HAS BEEN CANCELLED.**

**THANK YOU FOR ALL THAT WERE INTERESTED -  
WE ARE SORRY TO BE CANCELLING THIS SESSION  
AND LOOK FORWARD TO SEEING YOU IN THE FALL  
FOR OUR NEXT PLANNED SESSION.**

# SNEAK PEAK



---

OSWEGATCHIE to OSCEOLA

---

**SUNDAY MAY 29, 2022**

The Tour de Lewis - Oswegatchie to Osceola will be a non-competitive 62-mile or 28-mile ride through Lewis County's scenic Black River Valley and Tug Hill Plateau.

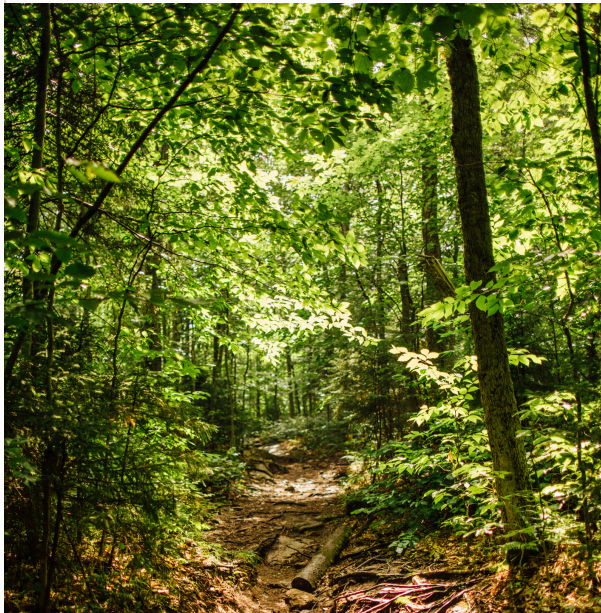
We will have updates on the event soon!



# 2022 Visitors Guide

The updated Visitors Guide for 2022 is well on its way!

Coming Soon



## What is the Visitors Guide?

The Lewis County Visitors Guide is a guide that includes a listing of places in Lewis County that locals and visitors alike can use to find locations to stay or play, and things to do around the county!



## Thank you!

Thank you to everyone who reached out to us with updates or requests to place an ad in the Visitors Guide! We appreciate your assistance in helping us make the Lewis County Visitors Guide the best tool for locals and visitors alike!



## Where can I get the Visitors Guide?

Want the current Visitors Guide at your location? Reach out to us at [admin@lewiscountychamber.org](mailto:admin@lewiscountychamber.org). We love having the guide available to everyone at as many locations as possible.



## When will the new Guide be available?

We are aiming for early spring to have the new guides out! We are currently finishing the updates to the guide to itself, then it will be designed, and finally it will be printed and distributed. We will share an update once we have the new guides available.

# THANK YOU FOR READING



## HAPPY JANUARY

We hope you enjoyed the updates provided in this eNewsletter!

A graphic showing a stack of "ARC CASH RAFFLE" tickets. A green banner at the top says "IT'S BACK!". The ticket text includes: "THE ARC, ONEIDA-LEWIS CHAPTER", "245 Genesee Street • Utica New York 13501", "Presented by: Friends of The Office FOUNDATION", "SUPPORTING SMART HOMES FOR SAFE LIVING", "A MAXIMUM OF 2,000 TICKETS WILL BE SOLD. NOTE: IF LESS THAN 2,000 TICKETS ARE SOLD, PRIZE AMOUNTS WILL BE PRORATED ACCORDING TO THE NUMBER OF TICKET SALES. WINNERS NEED NOT BE PRESENT TO WIN!", "GRAND PRIZE: \$10,000", "SECOND PRIZE: \$2,000", "THIRD PRIZE: \$500", "DRAWING: APR 15, 2022", "DONATION \$20.00", and "Printing generously donated by PJ Green". A white mouse cursor icon points at a green circle with a black outline.

## ASK ME ABOUT TICKETS!