

# GPS

**Lowville Number 4 Road**  
- Black River Boat Launch  
43.7747676,-75.446459

**Dadville Water Road** -  
Black River Fishing Deck  
43.8061218,-75.4706452

**Castorland Route 410** -  
Black River Boat Launch  
43.8946653,-75.5030328

**Lake Bonaparte**  
44.1607288,-75.3900401

**Croghan - Long Pond Road**  
- Clear Pond Boat Launch  
43.9832199,-75.2246751

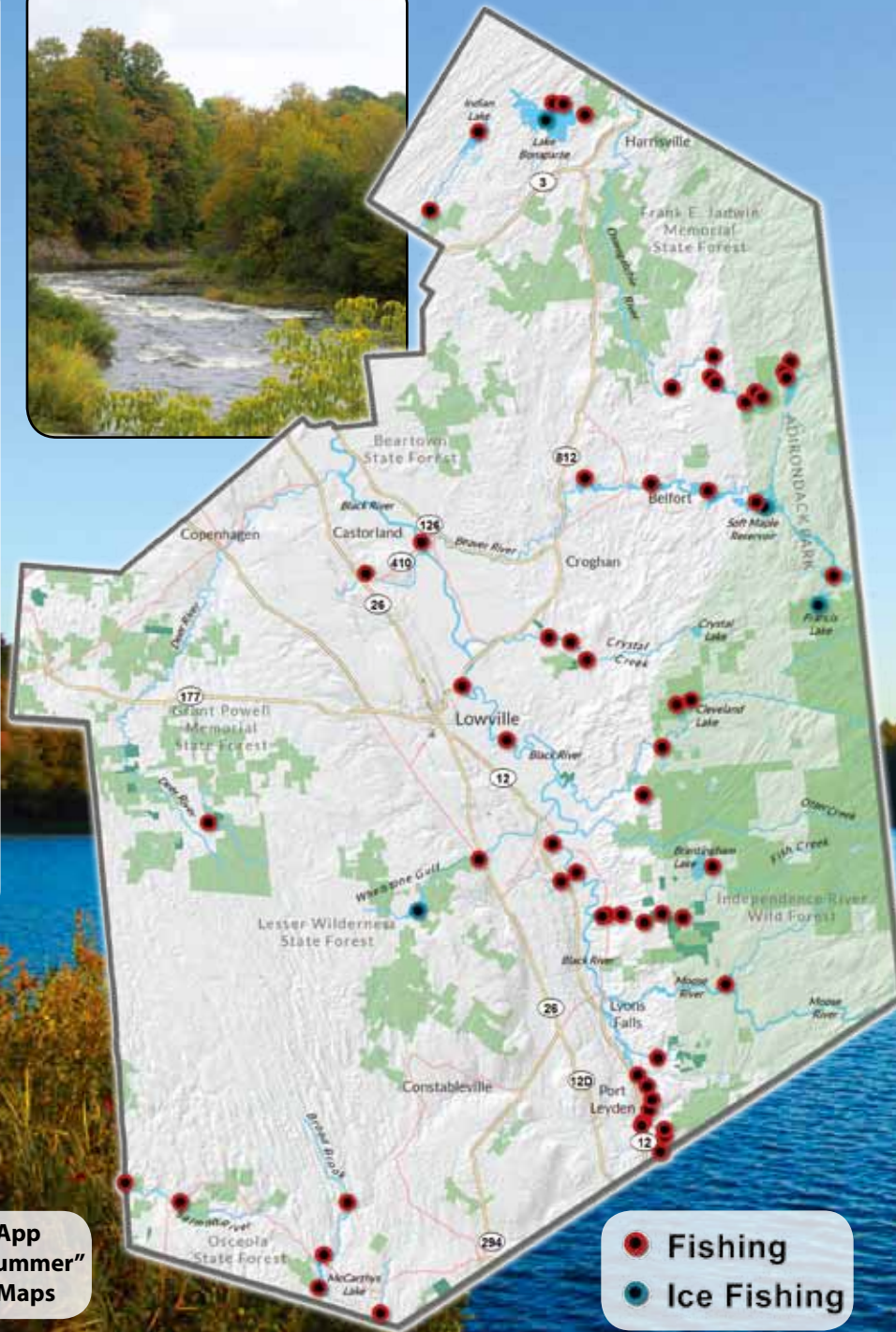
**Watson - Cleveland Lake Road** -  
Payne Lake Boat Launch  
- 43.7948729,-75.292999

**High Falls Pond** - Old  
State Road Boat Launch  
43.9306377,-75.3667861

**Jerden Falls**  
44.0112113,-75.3189942

**Lyons Falls Dam**  
43.618897,-75.357413

**Singing Waters**  
43.6670179,-75.357466



- Fishing
- Ice Fishing



**Free Mobile App**  
"Lewis County Summer"  
Includes Trail Maps

AdirondacksTugHill.com

# FISHING

## Lewis County, NY



*Adirondacks*  
**TUG HILL**  
REGION

*Our backyard.  
Your adventure.*



### Grab your fishing poles, family and friends ...

Lewis County NY Public Fishing Access includes 13 creeks/ivers with 127 plus miles, along with public access to about 12 lakes/ponds/reservoirs for you to fish! The region provides fishing for trout, bass, pike, perch, bullhead and more. Novice, experts, and all ages can find that special fishing spot.

#### Trout Streams

A variety of trout species are stocked and found in numerous creeks including Black, Alder, Crystal, Otter and Point Rock creeks, as well as the upper portions of some of the major rivers, Lake Bonaparte and Brantingham Lake. Anglers looking for native brook trout should try the numerous tributaries of East Branch of Fish Creek, upper Mad River and Otter Creek and the Sugar River. Several wild brook and brown trout streams can be found on the eastern side of the Black River.

### Fishing Black River & tributaries

High Falls in Lyons Falls to Carthage (40 miles) is particularly a low gradient (less than 10 feet in 40 miles) with no dams. Catches of bullhead, walleye and northern pike, smallmouth bass, rock bass and chain pickerel are most common. The three larger tributaries, Otter Creek, Independence River and Deer River, can also be canoed and fished near their mouths. Rocky areas are more common upstream of Greig, and meanders are extensive near Lowville. One can find many access & boat launch sites. See Lewis County, DEC Region 6 at [dec.ny.gov](http://dec.ny.gov).

### Guidelines to Remember:

- Remove all mud and aquatic plants from all gear, boats, motors and trailers before departing from your fishing location.
- Drain all water including bilges, live wells, and bait tanks before departing from your fishing location.
- Do not transport fish from one body of water to another.
- Do not release unused bait into a body of water.
- Do not dispose of fish carcasses or by-products in any body of water.
- SEE [dec.ny.gov](http://dec.ny.gov) for detailed Fishing Regulations

## Fishing Chart

	Beaver River	Belfort Pond	Black River	Chases Lake	Clear Pond	Deer River	Effley Falls Pond	Fish Creek	Forestry Pond	High Falls Res.	Indian River	Indian River Lake	Lake Bonaparte	Long Pond	Mad River	Moose River	Mud Pond	Oswegatchie River, W. Br.	Otter Creek	Point Rock Creek	Rock Pond	Trout Pond	Whetstone Creek	Whetstone Marsh Pond	Soft Maple Reservoir	Francis Lake
Brook Trout						X		X	X		X			X	X	X	X	X			X	X				
Brown Trout								X			X							X	X				X			
Bullhead	X		X						X				X	X		X								X		X
Chain Pickerel			X	X																						X
Largemouth Bass													X											X		
Northern Pike	X												X													
Smallmouth Bass	X	X	X			X	X			X			X			X										
Tiger Muskellunge																							X	X		
Walleye			X																							
Yellow Perch	X	X	X	X					X		X	X													X	X
Lake Trout													X													

